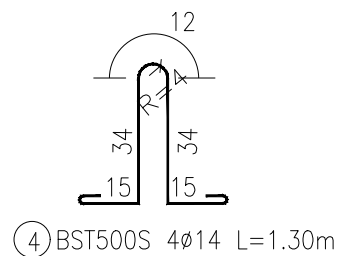


Sc. 1:20
SECTION A - A



Technical drawing of a rectangular reinforced concrete slab. The drawing shows a top-down view of the slab with a grid of reinforcement bars. The overall dimensions are 4.00m by 1.00m. The drawing includes various dimensions for the reinforcement bars, including spacing and offsets. A note at the top left indicates "Gol 30mm realizat cu teava PVC pentru ancora" (30mm slab made with PVC pipe for anchorage). The drawing is labeled with "A" and "B" for section lines. The reinforcement bars are labeled with numbers 1, 1', 1'', 2, 3, 4, 5, and 6. The drawing is a detailed technical drawing of a reinforced concrete slab, showing the layout of the reinforcement bars and the dimensions of the slab and the bars.

Technical drawing of a reinforced concrete slab and its cross-section.

Top View (Plan):

- Overall dimensions: 1.00m x 1.00m.
- Grid lines: 1, 2, 3, 4, 5.
- Reinforcement bars: 2x16ø8 (labeled 3) and 8ø14 (labeled 5).
- Dimensions: 5, 15, 20, 20, 20, 15, 5.

Cross-Section (Side View):

- Overall height: 32.
- Concrete cover: 5 (top and bottom).
- Reinforcement bars: 1, 2, 3, 4, 5.
- Dimensions: 5, 22, 5.

Detail (Corner View):

- Dimensions: 40, 24, 10, 10.
- Reinforcement bars: 5 (8ø14 L=1.10m).

Sc. 1:50

Mastic bituminos

PLACA DE RACORDARE L=4.00m

Grinda de rezervare 40x40

C25/30

Strat drenant din nisip graunton 10cm grosime

Dimensions: .30, .40, .50, 2.20, .40, .40

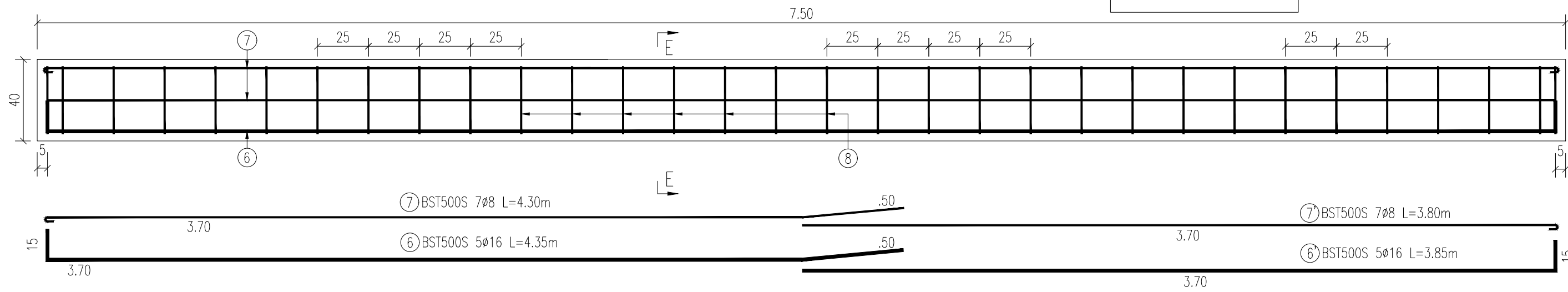
Marca	Ø (mm)	n	L (m)	BST 500S		
				Ø8	Ø14	Ø16
1	16	6	3,90			23,40
1'	16	5	2,90			14,50
2	8	6	3,90	23,40		
3	8	32	1,00	32,00		
4	14	4	1,30		5,20	
5	14	8	1,10		8,80	
Total lungimi/diametre (m)				55,40	14,00	37,90
Greutate/diametru				0,395	1,208	1,578
Greutate/metru (kg)				22	17	60
Total greutate (kg)				99		
TOTAL GREUTATE PENTRU 14 BUC.				1380		

Marca	Ø (mm)	n	L (m)	BST500 S	
				Ø8	Ø16
6	16	5	4,35		21,75
6'	16	5	3,85		19,25
7	8	7	4,30		30,10
7'	8	7	3,80		26,60
8	8	33	1,45	47,85	
Total lungimi/diametre (m)				47,85	97,70
Greutate/diametru				0,395	1,578
Greutate/metru (kg)				19	154
Total greutate (kg)				173	
TOTAL GREUTATE PENTRU 2 BUC.				346	

1. Orice modificare a prezentei planse se face numai cu acordul scris al proiectantului.
2. Orice neconcordanță cu prevederile prezentei planse și situația din amplasamentul podului, se va aduce la cunoștința proiectantului.

Clasa beton:	C25/30
Clasa de expunere:	XC1
Valoare maxima A/C:	0.50
Armături:	BST 500S

Sc. 1:20
SECTIUNE D - D



Technical drawing of the BST500S 3308 L=1.45m. The drawing shows a top view and a side view. The top view is a square with a side length of 40. It has a central square hole with a side length of 33. The distance from the center of the hole to the outer edge is 15. The side view shows a profile with a height of 40 and a width of 33. The drawing is labeled with dimensions and part numbers.

⑧ BST500S 3308
L=1.45m

**PROIECTANT:**

lași, str. Plopii fără soț nr. 3
Romania, jud. Iași
RO 14447212
www.pod-proiect.ro

**REPARATII CURENTE POD
PE DN 17A, KM 50+608**

SEF PROIECT

ing. Adrian GROSU	↩
-------------------	---

PROIECTAT	
-----------	--

PROJECTAT	
Tipus d'obra:	CL

ing. Adrian GRUSU	

DESENAT

ing. Marius GHEBAC	
--------------------	--

[illegible]

ing. Ilie Boader, URITCU

Ing. Ilie-Bogdan HRIUCU	

DENUMIRE PLAN

PLAN COERAJ ARM

PLACA DE RACORD.

GRINDA DE REZEM

--

Contract nr. 246 din 02.

Revizia nr.:

Scara:	1
--------	---

Data:	

Data:	
N. B.	C. 124 / B. 3